

APPENDIX I

BUFFALO RIVER WATERSHED (HUC-09020196)

PILOT PROGRAM WORKPLAN

# EXHIBIT A

Buffalo-Red River Watershed District (HUC – 09020106)

**Project Title:** One Water Pilot Project for the Buffalo Red River Part 1

## Project Information:

**Name of Organization:** Buffalo-Red River Watershed District (BRRWD)  
**Type of Organization:** Special purpose unit of government – Watershed District  
**Project Manager:** Bruce Albright, BRRWD Administrator  
**Address:** PO Box 341, Barnesville, MN 56514  
**Phone:** 218-354-7710  
**Fax:** 218-354-2503  
**Email:** [brrwd@bvillemn.net](mailto:brrwd@bvillemn.net)  
**Web:** [www.brrwd.org](http://www.brrwd.org)

**Responsible Parties:** Bruce Albright, BRRWD Administrator  
123 Front Street  
PO Box 341  
Barnesville, MN 56514  
218-354-7710  
[brrwd@bvillemn.net](mailto:brrwd@bvillemn.net)

Erik Jones, District Engineer  
Houston Engineering  
1401 21<sup>st</sup> Avenue North  
Fargo, ND 58102  
701-237-5065  
[ejones@houstoneng.com](mailto:ejones@houstoneng.com)

## Project Overview

The Buffalo River Watershed Pilot Project is one of two pilots in Minnesota (the other is the Cannon River Watershed) designed to develop a watershed approach for managing Minnesota's surface waters. The goal of this project will be to develop a plan that will guide surface water quality management throughout the watershed. The plan will provide for protection where conditions are excellent and restoration where conditions are impaired. The plan is intended to supplement the BRRWD'S 10-year plan and eventually will be a chapter, identifying water quality management activities in the watershed. It will also lay out the role of the state and local resource management organizations within the watershed, including the MPCA. Therefore, it will be a plan within a plan, and the final product will be referred to as "The Plan" for this report. It is important to understand that just as watersheds are nested within each other, this plan exists because of the overall work of the BRRWD.

The BRRWD has developed additional work products that make it an excellent candidate for one of the state's two pilot watershed management plans. These include:

1. The BRRWD 10 year comprehensive plan
2. Long-time support for comprehensive water quality and flow monitoring, especially the extensive use of citizen volunteers;
3. Investigations into the sources and transport of sediment in the South Branch of the Buffalo River;
4. Investigations into the stressors influencing aquatic habitat in the South Branch of the Buffalo River;
5. A willingness to participate in a State of Minnesota social indicators project.
6. Preliminary SWAT Sediment Modeling to be completed by June 30, 2009, completed under an existing 319 Project.
7. International Water Institute has completed LIDAR aerial surveying and data should become available for much of the Buffalo River Drainage by spring 2009.

The BRRWD and the MPCA intend to link each of these projects into this planning effort. As appropriate, tasks from these activities that are ongoing during the project timeframe will be listed as tasks, but without costs assigned since the costs are being paid by other grants or programs.

The MPCA has asked the BRRWD to develop one of the state's first two watershed management plans because the MPCA is interested in developing a watershed-based approach for surface waters protection and restoration.

### **What is a watershed approach?**

It is a framework for integrating science, policy, economic and social issues into approaches for managing water resources in a specific geographic setting.

The components are:

- Science and information about the watershed;
- Specific sets of surface water quality goals and targets ranging from those of watershed wide significance, to smaller sub-watershed, and ultimately to specific reaches of rivers and streams within the watershed. Goals for restoration and protection will be targeted to all these areas
- Processes for participants to learn and provide feedback; analyze information; deliberate courses of action and make decisions; this process must be credible, accessible, fair and replicable.
- Provisions to assess and address the capacity of the partners to participate in implementing the decisions made to restore and/or protect the waters.

### **What we have:**

- Good information about the condition of the watershed in the BRRWD 10 year plan;
- Sufficient surface water quality monitoring coverage throughout the watershed, with plans in place to fill in existing data gaps;

- Sound local knowledge about the condition of the 11HUCs and/or BRRWD planning regions;
- Existing knowledge regarding what's needed to address problem areas within the watershed.

#### **What we don't have**

- A strategy for implementing BMPs at locations where we think they will be most effective;
- A general understanding in the public of the value of water quality work and how individuals can contribute to watershed conditions;
- Clear roles for state and local partners in achieving water quality goals ;
- The ability to easily reconcile differences between point source and nonpoint source water quality management programs;.
- The ability to easily identify and assess the differing costs and benefits of various water quality protection and restoration strategies;
- The ability to apply common sense solutions that are apparent to everyone.

The project will be a multi-year effort, but funding is currently available for Part 1 as described in this work plan.

#### **Additional Background/Scope**

The BRRWD represents an area of about 1,100 contributing square miles, including areas of Clay, Becker, Otter Tail and Wilkin Counties. The major tributaries of the watershed include the Buffalo River and the South Branch of the Buffalo River (and its tributaries, including Whisky, Deerhorn, Stony and Hay Creeks). Several county ditch systems contribute flow to the Buffalo River and its south Branch. Portions of Hay and Stony Creeks are legal ditch systems. The Buffalo River originates in Tamarac Lake in Becker County.

Two ecoregions comprise the watershed. The southern and western portion of the watershed lies in the [Red River Valley ecoregion](#). The eastern portion of the basin lies in the [North Central Hardwood Forest ecoregion](#).

Glacial deposits in the western portion of the watershed are glacial lake deposits of clay and silt from Glacial Lake Agassiz, and glacial lakeshore deposits of delta sand and gravel, along with areas of beach sand ridges separated by silty wetland depressions. The eastern portion of the watershed has primarily till glacial deposits made up of clay, silt, sand, gravel, cobble and boulders. Soils in the watershed vary moving from west to east from clayey soils of the lake plain at the mouth of the watershed, to black, limy, clayey soils; sandy soils; black, loamy soils; loamy soils and rolling wooded soils in the very uplands of the watershed.

Historic land cover in the watershed was primarily prairie/grassland (73%), wetland (14%), and forest (10%). Currently, the dominant land use is cropland (77%) with prairie/grassland having been reduced to 4% of land cover, wetlands having been reduced to 7%, and forests having been reduced to 6%. Land cover in the riparian areas (1,000 feet on either side of rivers) of rivers of

the watershed is mainly cropland (67%) and wetland (15%). Primarily for agricultural purposes, wetlands have been extensively drained in the southern portion of the watershed.

A buried sand aquifer, the Buffalo aquifer, containing large amounts of ground water underlies the watershed near its mouth. Smaller quantities of ground water are available throughout the rest of the basin. An average of 2,700 acre-feet per year of ground water is pumped for municipal water supplies and crop irrigation. Ground water recharge occurs in the moraine area, while discharge occurs to the Red River, the Buffalo River and the glacial lake plain.

## **TMDL Work**

As mentioned earlier, the product of this project will be a plan that will provide for protection where conditions are excellent, and restoration where conditions are impaired. Restoration activities for impaired waters will be addressed through a TMDL (Total Maximum Daily Load) study for the watershed.

The Buffalo River mainstem (HUC-09020106-501), its South Branch (HUC-09020106-505), and Stony Creek (HUC-09020106-502) are Class 2B waters of the state. Designated beneficial uses for these waters include supporting a cool- and warm-water fishery, associated aquatic life, and their habitats. The Buffalo River and Stony Creek have been determined as impaired for aquatic life due to excessive sediment (turbidity). The Buffalo River and Stony Creek, a tributary to its South Branch, were included on the MPCA 303(d) list in 1996. The reach of the South Branch of the Buffalo River between Dehorn Creek and Whisky Creek was listed in 2002 as being impaired for aquatic life (fish).

Existing data and newly collected waters quality data within the watershed will be analyzed to verify the impairments on the currently listed reaches within the watershed, and to determine the status of the remaining river reaches to ascertain their status as being either impaired or unimpaired. These activities and resultant TMDL studies will likely continue throughout the life of this project.

Stakeholder involvement and public participation efforts will be a focus for the entire project, but especially activities associated with the TMDL work.

## **Part 1: Tasks/Outcomes/Products**

### **1. The Development of a Description of Existing Watershed Conditions**

The review and organization of existing documentation and data from within the BRRWD providing soils, slope, land use, demographic and point sources data and information by 11 HUC, DNR minor watershed or an alternate format recommended by the group. This will aid in the characterization of the condition of contributing subwatersheds (either by 11 HUC, DNR minor watersheds or an alternate format recommended by the group) as meeting or not meeting designated water quality uses. The characterization is to be made by the stakeholder group based on the available data. In addition, a bibliography of existing data sources and publications

applicable to the Red River Basin will be created. Short abstracts summarizing content will be created for each source of information. Gaps in both documentation and data will be identified.

**Cost:** \$29,778.00

**Timeframe:** March 23, 2009 through December 31, 2009

**Deliverable:** Watershed Conditions Report, with recommendations for data sources for standardizing work in the future, existing data will be organized and presented in maps and/or tables.

## **2. The Development and Implementation of a Process to Advance the Watershed Based Water Quality Management Plan / Buffalo River Watershed TMDL**

This is the process by which project planning will proceed. It will define the roles for all participants, including the BRRWD supervisors, the watershed staff and consultants, watershed district residents, and state local resource staff, including MPCA staff. The BRRWD is responsible for the coordination, reporting, financial tracking and overall management of the project. The BRRWD will secure the appropriate legal and technical services as required. All contracts will be reviewed and approved by the BRRWD board. The work included under Part 1 includes formalizing the groups that will assist the BRRWD through the project development process. It is critical that stakeholders be involved in the decision making process. As described in the National Research Council report on managing watersheds, the steps of stakeholder participation are:

- a. Learning and feedback
- b. Analysis
- c. Deliberation and
- d. Decision making.

**Cost:** \$19,659.00

**Timeframe:** March 23, 2009 through June 30, 2010

**Deliverable:** A hierarchy of groups will be established. The various groups will bring public citizen input as well as provide additional technical and communication expertise to the study process. A media/communications plan will also be formalized during this phase

## **3. The Development of a Methodology to Identify Sources of Water Quality Pollution and Stressors and Set Pollutant Load Allocations for Subwatersheds.**

Utilize existing guidance from EPA (Stressor ID and Watershed guidance manuals) to develop a process to help staff and stakeholders identify pollution sources and stressors that can be used both to identify critical areas, set goals and serve as a template for future plans. This will result in the development of a process for developing load allocations for each subwatershed that has been characterized. As each contributing watershed is characterized, a determination will be made if the unit is meeting or not meeting its designated use. For each contributing watershed not meeting its designated use, the stakeholders should list potential issues of concern that may be contributing to non-attainment. A pilot subwatershed will be chosen based on available data (eg. Stony Creek) to demonstrate the methodology developed.

**Cost:** \$33,038.00

**Timeframe:** August 1, 2009, through August 1, 2010

**Deliverables:** Document Process/Methodology for reviewing pollutant sources

**4. Institute the Intensive Watershed Monitoring Program by the MPCA, and Additional Water Quality Monitoring Within the Watershed**

Execute the monitoring plan for river and streams within the watershed to collect additional water quality data to allow for the validation of listed impaired reaches and the effective assessment of rivers and streams with insufficient data in order to assess whether or not they are impaired. This is a fundamental aspect of watershed wide TMDL development. During 2009 the MPCA will institute its Intensive Watershed Monitoring within the Buffalo River watershed focusing on the collection of data to ascertain the condition of Biota (fish and macro-invertebrates) within the watershed. Beginning in the spring of 2009, the MPCA, the Red River Water Management Board (RRWMB), and Riverwatch will cooperate in collecting water chemistry and flow data that will provide data for river and stream reaches where data has been determined to be inadequate or non-existent. Some, if not all of this sampling and analysis will continue through the fall of 2010.

**Cost:** \$0

**Timeframe:** March 23, 2009 – October 31, 2010 **Deliverables:** Water Quality Data

**5. Over-all Pilot Project Work Plan Completion**

Finalize the remaining tasks and outcomes for all the remaining elements of the project.

**Cost:** \$5,435

**Timeframe:** June 30, 2010, through October 31, 2010

**Deliverables:** Work Plan for remaining TMDL study.

## Outcomes and Tasks Spreadsheet

ID	Outcomes and Tasks	Work	Units	Unit Rate	Cost	Start	Finish	Responsible Lead
	<b>1. Develop a Description of Existing Watershed Conditions</b>				<b>\$29,778.00</b>	<b>3/23/2009</b>	<b>12/31/2009</b>	
1	Identify, collect, and review relevant information (water quality monitoring data, all local plans, BRRWD plan), Identify Gaps - literature review				<b>\$12,666.00</b>	3/23/2009	6/30/2009	BRRWD
	Project Manager	10	hours	\$113.00	\$1,130.00	3/23/2009	6/30/2009	
	Engineer V	120	hours	\$71.00	\$8,520.00	3/23/2009	6/30/2009	
	Environmental Scientist III	20	hours	\$94.00	\$1,880.00	3/23/2009	6/30/2009	
	GIS Specialist	16	hours	\$71.00	\$1,136.00	3/23/2009	6/30/2009	
2	Assemble available Water Quality Data for the Buffalo River				<b>\$426.00</b>	3/23/2009	4/15/2009	MPCA
	Engineer V	6	hours	\$71.00	\$426.00	3/23/2009	4/15/2009	
	MPCA Staff		hours		\$0.00	3/23/2009	4/15/2009	
3	Finalize monitoring plan, in partnership with MPCA and others (tentative plan developed)				<b>\$226.00</b>	3/30/2009	4/30/2009	BRRWD/MPCA
	Project Manager	2	hours	\$113.00	\$226.00	3/30/2009	4/30/2009	
	MPCA Staff		hours		\$0.00	3/30/2009	4/30/2009	
4	Review current ongoing research				<b>\$1,730.00</b>	5/1/2009	6/30/2009	BRRWD,MPCA
	Project Manager	2	hours	\$113.00	\$226.00	5/1/2009	6/30/2009	
	Environmental Scientist III	16	hours	\$94.00	\$1,504.00			
5	Develop a presentation format of the information (spreadsheet and/or maps)				<b>\$1,604.00</b>	7/1/2009	7/31/2009	BRRWD/MPCA
	Project Manager	4	hours	\$113.00	\$452.00	7/1/2009	7/31/2009	
	Engineer V	12	hours	\$71.00	\$852.00	7/1/2009	7/31/2009	
	Administrator/Office Manager	4	hours	\$75.00	\$300.00	7/1/2009	7/31/2009	
	MPCA Staff		hours		\$0.00	7/1/2009	7/31/2009	

Exhibit A Work Plan  
CFMS Contract Number:

6	Produce a report summarizing the Watershed Conditions, recommendations on data sources for standardizing work in the future (this will include landuse considerations for future modeling), Bibliography of existing reference publications.				<b>\$10,890.00</b>	8/1/2009	9/1/2009	BRRWD
	Project Manager	10	hours	\$113.00	\$1,130.00	8/1/2009	9/1/2009	
	Engineer V	60	hours	\$71.00	\$4,260.00	8/1/2009	9/1/2009	
	Environmental Scientist III	10	hours	\$94.00	\$940.00	8/1/2009	9/1/2009	
	GIS Specialist	60	hours	\$71.00	\$4,260.00	8/1/2009	9/1/2009	
	Administrative Assistant I	6	hours	\$50.00	\$300.00	8/1/2009	9/1/2009	
	MPCA Staff		hours		\$0.00	8/1/2009	9/1/2009	
7	Public Participation/Outreach Communications				<b>\$1,634.00</b>	3/23/2009	12/31/2009	MPCA
7.1	Develop information for MPCA Project Press releases, pamphlets, handouts, etc., as necessary (ie. Mapping, tables)				\$1,086.00	3/23/2009	10/15/2009	BRRWD
	Project Manager	2	hours	\$113.00	\$226.00	3/23/2009	10/15/2009	
	GIS Specialist	10	hours	\$71.00	\$710.00	3/23/2009	10/15/2009	
	Administrator/Office Manager	2	hours	\$75.00	\$150.00	3/23/2009	10/15/2009	
	MPCA Staff		hours		\$0.00	3/23/2009	10/15/2009	
7.2	Updating Information on the PCA Website				\$0.00	3/23/2009	10/15/2009	MPCA
	MPCA Staff		hours		\$0.00	3/23/2009	10/15/2009	
7.3	Updating information on the Buffalo-Red River Watershed District's Webpage (2 updates)				\$548.00	4/6/2009	11/15/2009	BRRWD
	Project Manager	1	hours	\$113.00	\$113.00	4/6/2009	11/15/2009	
	GIS/Web Specialist	4	hours	\$90.00	\$360.00	4/6/2009	11/15/2009	
	Administrator/Office Manager	1	hours	\$75.00	\$75.00	4/6/2009	11/15/2009	
	MPCA Staff		hours		\$0.00	4/6/2009	11/15/2009	
8	MPCA to Document the Planning Process (1st Update)				<b>\$376.00</b>	12/1/2009	12/31/2009	MPCA with input from BRRWD
	Project Manager	2	hours	\$113.00	\$226.00	12/1/2009	12/31/2009	
	Administrator/Office Manager	2	hours	\$75.00	\$150.00	12/1/2009	12/31/2009	
	MPCA Staff		hours		\$0.00	12/1/2009	12/31/2009	
9	Semi-Annual Project Reporting				<b>\$226.00</b>	8/1/2009	8/1/2009	
	Project Manager	2	hours	\$113.00	\$226.00	8/1/2009	8/1/2009	

	<b>2 . Develop and Implement a Process to advance the Watershed Based Water Quality Management Plan/Buffalo River TMDL</b>				<b>\$19,659.00</b>	<b>3/23/2009</b>	<b>6/30/2010</b>	
1	Define the roles for all participants (BRRWD Managers, Watershed Staff and consultants, WD residents, state Agency Staff, and MPCA)				<b>\$1,690.00</b>	3/23/2009	4/20/2009	MPCA/BRRWD
	BRRWD/MPCA to develop draft planning process				\$0.00	3/23/2009	4/20/2009	MPCA
	Project Manager	10	hours	\$113.00	\$1,130.00	3/23/2009	4/20/2009	
	Administrator/Office Manager	6	hours	\$75.00	\$450.00	3/23/2009	4/20/2009	
	Mileage - Car	200		\$0.55	\$110.00	3/23/2009	4/20/2009	
	MPCA Staff		hours		\$0.00	3/23/2009	4/20/2009	
2	Identify and contact Stakeholders (MPCA, BRRWD, SWCDs, Technical Advisory Committee (TAC), Citizen Advisory Committee (CAC), others)				<b>\$1,878.00</b>	3/23/2009	4/20/2009	BRRWD with Input from MPCA
	Project Manager	10	hours	\$113.00	\$1,130.00	3/23/2009	4/20/2009	
	Administrator/Office Manager	6	hours	\$75.00	\$450.00	3/23/2009	4/20/2009	
	Resident Secretary	6	hours	\$33.00	\$198.00	3/23/2009	4/20/2009	
	Postage/Mailing Supplies	100	hours	\$1.00	\$100.00	3/23/2009	4/20/2009	
	MPCA Staff		hours		\$0.00	3/23/2009	4/20/2009	
3	Project Kick-off Meeting (Project Outreach Committee)				<b>\$1,293.00</b>	4/21/2009	5/15/2009	BRRWD/MPCA
	Project Manager	6	hours	\$113.00	\$678.00	4/21/2009	5/15/2009	
	Administrator/Office Manager	6	hours	\$75.00	\$450.00	4/21/2009	5/15/2009	
	Mileage - Car	300	miles	\$0.55	\$165.00	4/21/2009	5/15/2009	
	MPCA Staff		hours		\$0.00	4/21/2009	5/15/2009	
4	Project Stakeholder Meetings and Prep (3 meetings assumed), Meeting minutes				<b>\$8,373.00</b>	5/1/2009	3/31/2010	BRRWD/MPCA
	Project Manager	18	hours	\$113.00	\$2,034.00	5/1/2009	3/31/2010	
	Engineer V	24	hours	\$71.00	\$1,704.00	5/1/2009	3/31/2010	
	Administrator/Office Manager	30	hours	\$75.00	\$2,250.00	5/1/2009	3/31/2010	
	Resident Secretary	30	hours	\$33.00	\$990.00	5/1/2009	1/31/2010	
	Mileage - Car	900	miles	\$0.55	\$495.00	5/1/2009	3/31/2010	
	MPCA Staff		hours		\$0.00	5/1/2009	3/31/2010	
	Meeting Room Rental	3	meetings	\$200.00	\$600.00	5/1/2009	3/31/2010	

Exhibit A Work Plan  
CFMS Contract Number:

	Postage/Mailing Supplies	300		\$1.00	\$300.00	5/1/2009	3/31/2010	
5	MPCA to Document the Planning Process				<b>\$376.00</b>	4/1/2010	4/15/2010	MPCA with input from BRRWD
	Project Manager	2	hours	\$113.00	\$226.00	4/1/2010	4/15/2010	
	Administrator/Office Manager	2	hours	\$75.00	\$150.00	4/1/2010	4/15/2010	
	MPCA Staff		hours		\$0.00	4/1/2010	4/15/2010	
6	Develop and Implement Public Participation/Communication Plan to address requirements of Clean Water Legacy and EPA TMDL process				<b>\$5,823.00</b>	3/23/2009	6/30/2010	BRRWD/MPCA - Outline of Activities Drafted by Dan Olson (MPCA - PIO)
6.1	Media/Communications Plan Development				\$376.00	3/23/2009	4/6/2009	MPCA
	Project Manager	2	hours	\$113.00	\$226.00	3/23/2009	4/6/2009	
	Administrator/Office Manager	2	hours	\$75.00	\$150.00	3/23/2009	4/6/2009	
	MPCA Staff		hours		\$0.00	3/23/2009	4/6/2009	
6.2	Media Relations with Area newspapers, radio, and TV Stations				\$1,504.00	10/1/2009	1/31/2010	MPCA
	Project Manager	8	hours	\$113.00	\$904.00	10/1/2009	1/31/2010	
	Administrator/Office Manager	8	hours	\$75.00	\$600.00	10/1/2009	1/31/2010	
	MPCA Staff		hours		\$0.00	10/1/2009	1/31/2010	
6.3	Develop information for MPCA Project Press releases, factsheets, pamphlets, handouts, etc., as necessary (ie. Mapping, tables)				\$1,086.00	3/30/2009	6/30/2010	BRRWD
	Project Manager	2	hours	\$113.00	\$226.00	3/30/2009	6/3/2009	
	GIS Specialist	10	hours	\$71.00	\$710.00	3/30/2009	6/3/2009	
	Administrator/Office Manager	2	hours	\$75.00	\$150.00	3/30/2009	6/3/2009	
6.4	Updating Information on the PCA Website				\$0.00	5/1/2009	5/15/2009	MPCA
	MPCA Staff		hours		\$0.00	5/1/2009	5/15/2009	
6.5	Updating information on the Buffalo-Red River Watershed District's Webpage				\$548.00	5/1/2009	5/15/2009	BRRWD
	Project Manager	1	hours	\$113.00	\$113.00	5/1/2009	5/15/2009	
	GIS/Web Specialist	4	hours	\$90.00	\$360.00	5/1/2009	5/15/2009	
	Administrator/Office Manager	1	hours	\$75.00	\$75.00	5/1/2009	5/15/2009	
	MPCA Staff		hours		\$0.00	5/1/2009	5/15/2009	
6.6	Public kickoff meeting to discuss the project study				\$2,309.00	12/10/2009	1/31/2010	BRRWD, MPCA

	Project Manager	10	hours	\$113.00	\$1,130.00	12/10/2009	1/31/2010	
	Administrator/Office Manager	6	hours	\$75.00	\$450.00	12/10/2009	1/31/2010	
	Resident Secretary	8	hours	\$33.00	\$264.00	12/10/2009	1/31/2010	
	Mileage - Car	300	miles	\$0.55	\$165.00	12/10/2009	1/31/2010	
	Postage/Mailing Supplies	100		\$1.00	\$100.00	12/10/2009	1/31/2010	
	MPCA Staff		hours		\$0.00	12/10/2009	1/31/2010	
	Meeting Room Rental	1		\$200.00	\$200.00	12/10/2009	1/31/2010	
7	Semi-Annual Project Reporting				<b>\$226.00</b>	2/1/2010	2/1/2010	
	Project Manager	2	hours	\$113.00	\$226.00	2/1/2010	2/1/2010	
	<b>3. Develop a Methodology to Define and Identify Sources of Water quality Pollution and Stressors, and load allocations for Subwatersheds</b>				<b>\$33,038.00</b>	<b>8/1/2009</b>	<b>8/1/2010</b>	
1	Obtain from PCA and Review additional Water Quality Data obtained in 2009				<b>\$652.00</b>	11/1/2009	12/15/2009	BRRWD
	Project Manager	2	hours	\$113.00	\$226.00	11/1/2009	12/15/2009	
	Engineer V	6	hours	\$71.00	\$426.00	11/1/2009	12/15/2009	
	MPCA Staff		hours		\$0.00	11/1/2009	12/15/2009	
2	Review existing guidance from EPA (stressor ID and Watershed Guidance manual) to develop a process to help staff and stakeholders identify pollution sources and stressors that can be used to identify critical areas, set goals and serve as a template.				<b>\$3,970.00</b>	8/1/2009	12/1/2009	BRRWD
	Project Manager	10	hours	\$113.00	\$1,130.00	8/1/2009	12/1/2009	
	Engineer V	40	hours	\$71.00	\$2,840.00	8/1/2009	12/1/2009	
3	Process/Methodology to review pollutant sources that can be used by resource managers and stakeholders.				<b>\$5,852.00</b>	12/1/2009	1/31/2010	BRRWD
	Project Manager	24	hours	\$113.00	\$2,712.00	12/1/2009	1/31/2010	
	Engineer V	40	hours	\$71.00	\$2,840.00	12/1/2009	1/31/2010	
	Administrative Assistant I	6	hours	\$50.00	\$300.00	12/1/2009	1/31/2010	
	MPCA Staff		hours		\$0.00	12/1/2009	1/31/2010	
4	Description of the Applicable Water Quality Standards and Numeric Water Quality Targets				<b>\$794.00</b>	12/1/2009	1/31/2010	BRRWD

Exhibit A Work Plan  
CFMS Contract Number:

	Project Manager	2	hours	\$113.00	\$226.00	12/1/2009	1/31/2010	
	Engineer V	8	hours	\$71.00	\$568.00	12/1/2009	1/31/2010	
	MPCA Staff		hours		\$0.00	12/1/2009	1/31/2010	
5	Demonstrate Process/Methodology within one subwatershed of the Buffalo River (e.g. Stony Creek)				<b>\$19,534.00</b>	3/1/2010	6/20/2010	BRRWD
5.1	Compile and analyze subwatershed and waterbody data				\$4,938.00	2/1/2010	6/30/2010	BRRWD/MPCA
	Project Manager	6	hours	\$113.00	\$678.00	2/1/2010	4/1/2010	
	Engineer V	20	hours	\$71.00	\$1,420.00	2/1/2010	4/1/2010	
	GIS Specialist	40	hours	\$71.00	\$2,840.00	2/1/2010	4/1/2010	
5.2	Characterize in-stream conditions and impairments				\$3,518.00	4/1/2010	5/15/2010	BRRWD
	Project Manager	6	hours	\$113.00	\$678.00	4/1/2010	5/15/2010	
	Engineer V	40	hours	\$71.00	\$2,840.00	4/1/2010	5/15/2010	
5.3	Determine loadings (existing and allowable)				\$3,518.00	3/1/2010	5/31/2010	BRRWD
	Project Manager	6	hours	\$113.00	\$678.00	3/1/2010	5/31/2010	
	Engineer V	40	hours	\$71.00	\$2,840.00	3/1/2010	5/31/2010	
5.4	Pilot Watershed Project Stakeholder Meetings and Prep (2 meetings assumed)				\$7,560.00	4/1/2010	6/30/2010	BRRWD/MPCA
	Project Manager	18	hours	\$113.00	\$2,034.00	4/1/2010	6/30/2010	
	Engineer V	24	hours	\$71.00	\$1,704.00	4/1/2010	6/30/2010	
	Administrator/Office Manager	24	hours	\$75.00	\$1,800.00	4/1/2010	6/30/2010	
	Resident Secretary	24	hours	\$33.00	\$792.00	4/1/2010	6/30/2010	
	Mileage - Car	600	miles	\$0.55	\$330.00	4/1/2010	6/30/2010	
	MPCA Staff		hours		\$0.00	4/1/2010	6/30/2010	
	Meeting Room Rental	2	meetings	\$200.00	\$400.00	4/1/2010	6/30/2010	
	Postage/Mailing Supplies	500		\$1.00	\$500.00	4/1/2010	6/30/2010	
6	MPCA to Document the Planning Process (3rd Update)				<b>\$376.00</b>	6/20/2010	6/30/2010	MPCA
	Project Manager	2	hours	\$113.00	\$226.00	6/20/2010	6/30/2010	
	Administrator/Office Manager	2	hours	\$75.00	\$150.00	6/20/2010	6/30/2010	
	MPCA Staff		hours		\$0.00	6/20/2010	6/30/2010	
7	Public Participation/Outreach Communications				<b>\$1,634.00</b>	8/1/2009	6/30/2010	
7.1	Develop information for MPCA Project Press, pamphlets, handouts, etc. releases as necessary (ie. Mapping, tables)				\$1,086.00	8/1/2009	6/30/2010	BRRWD
	Project Manager	2	hours	\$113.00	\$226.00	8/1/2009	6/30/2010	

Exhibit A Work Plan  
CFMS Contract Number:

	GIS Specialist	10	hours	\$71.00	\$710.00	8/1/2009	6/30/2010	
	Administrator/Office Manager	2	hours	\$75.00	\$150.00	8/1/2009	6/30/2010	
	MPCA Staff		hours		\$0.00	8/1/2009	6/30/2010	
7.2	Updating Information on the PCA Website				\$0.00	8/1/2009	6/30/2010	
	MPCA Staff		hours		\$0.00	8/1/2009	6/30/2010	
7.3	Updating information on the Buffalo-Red River Watershed District's Webpage				\$548.00	8/1/2009	6/30/2010	BRRWD
	Project Manager	1	hours	\$113.00	\$113.00	8/1/2009	6/30/2010	
	GIS/Web Specialist	4	hours	\$90.00	\$360.00	8/1/2009	6/30/2010	
	Administrator/Office Manager	1	hours	\$75.00	\$75.00	8/1/2009	6/30/2010	
	MPCA Staff		hours		\$0.00	8/1/2009	6/30/2010	
8	Semi-Annual Project Reporting				\$226.00	8/1/2010	8/1/2010	
	Project Manager	2	hours	\$113.00	\$226.00	8/1/2010	8/1/2010	
	<b>4. Institute Intensive Watershed Monitoring and Other Monitoring on a Watershed-wide Basis</b>				<i>Other sources</i>	<b>4/1/2009</b>	<b>10/31/2010</b>	<b>MPCA</b>
	MPCA Staff		hours		\$0.00	4/1/2009	10/31/2010	
	<b>5. Complete Remaining Workplan for the Overall Pilot Project</b>				<b>\$5,435.00</b>	<b>6/30/2010</b>	<b>10/31/2010</b>	<b>BRRWD</b>
	Project Manager	40	hours	\$113.00	\$4,520.00	6/30/2010	10/31/2010	
	Administrator/Office Manager	10	hours	\$75.00	\$750.00	6/30/2010	10/31/2010	
	MPCA Staff		hours		\$0.00	6/30/2010	10/31/2010	
	Mileage - Car	300	miles	\$0.55	\$165.00	6/30/2010	10/31/2010	

## Part 1 Project Budget Summary

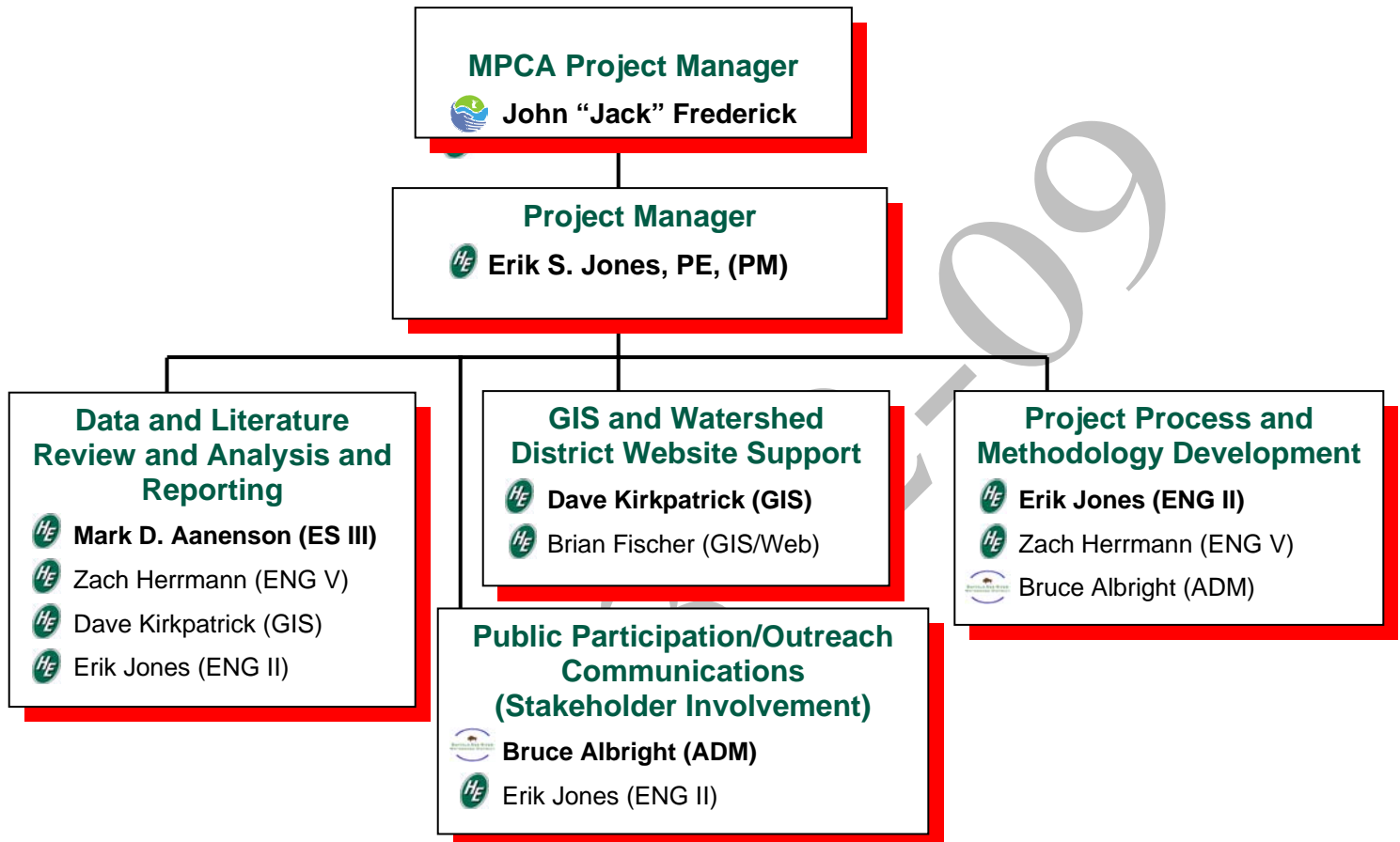
<b>Outcome 1</b>	<b>Existing Conditions Description of the Watershed</b>	<b>\$29,778.00</b>
<b>Outcome 2</b>	<b>Develop and Implement a Process to advance the Watershed Based Water Quality Management Plan / Buffalo River TMDL</b>	<b>\$19,659.00</b>
<b>Outcome 3</b>	<b>Develop a Methodology to Identify Sources of Water Quality Pollution and Stressors, and to Set Load Allocations for Subwatersheds, Demonstrate within on subwatershed</b>	<b>\$ 33,038.00</b>
<b>Outcome 4</b>	<b>Institute Intensive Watershed Monitoring (MPCA) and Other Monitoring on a Watershed Wide Basis*</b>	<b>\$0.00</b>
<b>Outcome 5</b>	<b>Over-all Project Work Plan Completion</b>	<b>\$5,435.00</b>
<hr/>		<hr/>
		<b>\$87,910.00</b>

\* largely funded from other sources.

Draft 3/2/09



Buffalo River Watershed Pilot Project – Part 1 Organization Chart



Abbreviation

PM  
ENG II  
ENG V  
ES III  
ADM  
GIS/Web  
GIS

Billing Classification

Project Manager  
Engineer II  
Engineer V  
Environmental Scientist III  
Watershed Administrator  
GIS/Web Specialist  
GIS Specialist