

**PROJECT NO. 35  
CLAY COUNTY DITCH NO. 47 - IMPROVEMENTS**  
1996 ASSESSMENT OF BENEFITS  
(ADOPTED 7/8/96)

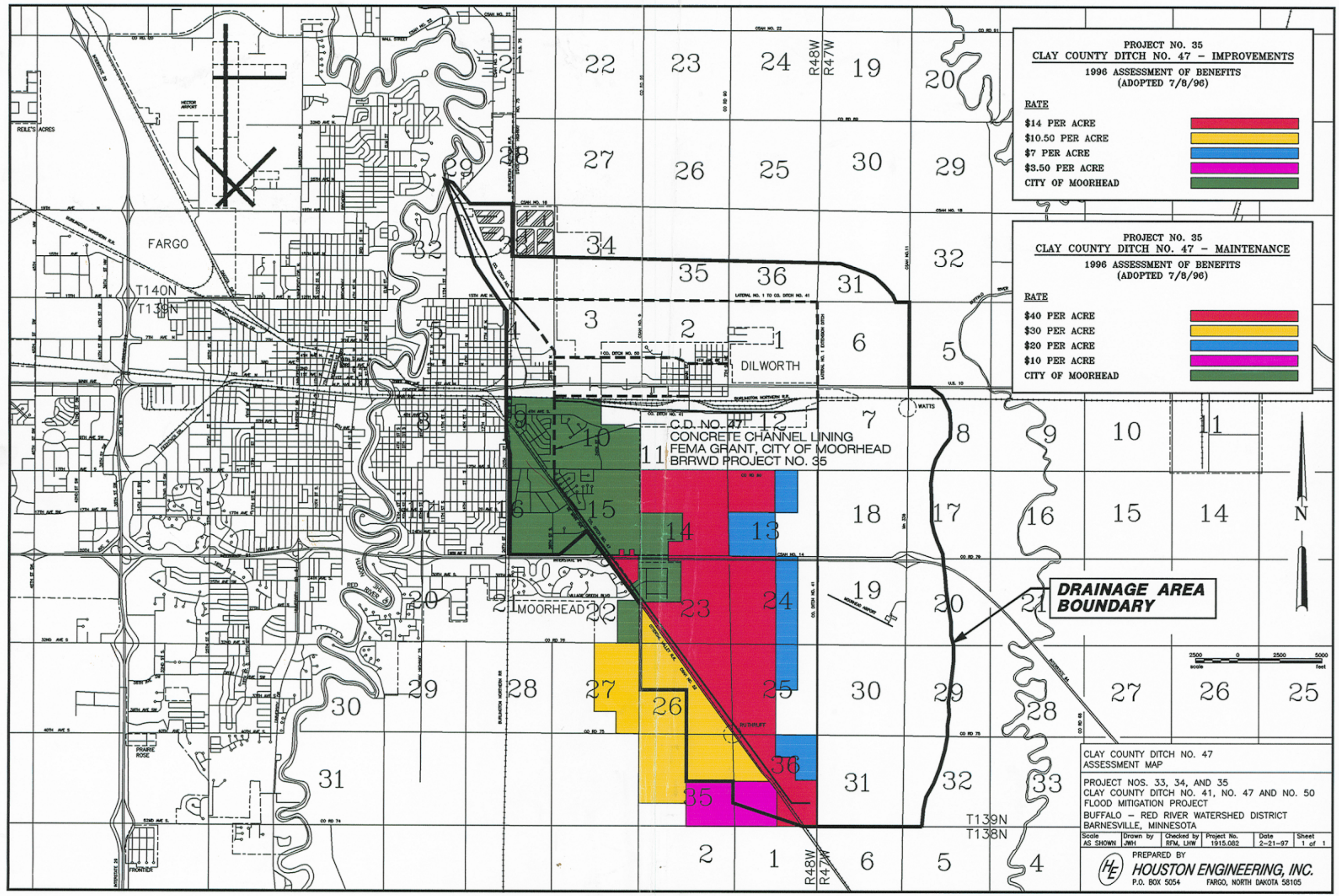
**RATE**

- \$14 PER ACRE
- \$10.50 PER ACRE
- \$7 PER ACRE
- \$3.50 PER ACRE
- CITY OF MOORHEAD

**PROJECT NO. 35  
CLAY COUNTY DITCH NO. 47 - MAINTENANCE**  
1996 ASSESSMENT OF BENEFITS  
(ADOPTED 7/8/96)

**RATE**

- \$40 PER ACRE
- \$30 PER ACRE
- \$20 PER ACRE
- \$10 PER ACRE
- CITY OF MOORHEAD



CLAY COUNTY DITCH NO. 47  
ASSESSMENT MAP

PROJECT NOS. 33, 34, AND 35  
CLAY COUNTY DITCH NO. 41, NO. 47 AND NO. 50  
FLOOD MITIGATION PROJECT  
BUFFALO - RED RIVER WATERSHED DISTRICT  
BARNESVILLE, MINNESOTA

Scale AS SHOWN	Drawn by JWH	Checked by RFW, LHW	Project No. 1915.082	Date 2-21-97	Sheet 1 of 1
----------------	--------------	---------------------	----------------------	--------------	--------------

PREPARED BY  
**HE HOUSTON ENGINEERING, INC.**  
P.O. BOX 5054 FARGO, NORTH DAKOTA 58105